



VisitValemount.ca



FALL & WINTER

📍 f TourismValemount #ValemountOnTheTrail

WELCOME TO WINTER IN VALEMOUNT

Let the mountains move you! Be inspired to preplan your winter adventures in Valemount. Known for the incredible snowmobiling, groomed cross country ski trails, dog sledding, snowcat-skiing, snow shoeing, ski-touring, heliskiing, and warm hospitality this vibrant village is your destination for a truly fun memorable Canadian Winter Experience. Snow capped peaks of the three mountain ranges beckon those prepared for the journey to come explore!

Visit Valemount, explore all our seasons, our culture and our wild side. See for yourself why Valemount is in the middle of everywhere.

Groomed trails provide access to the most spectacular alpine riding areas in Clemina, Allan Creek and Chappell Creek. Discover Crystal Ridge, the only snowmobile assisted ski/snowboard facility in the world!

Know before you go! Go to www.visitvalemount.ca and www.ridevalemount.com for information on planning your winter vacation!

The Welcome to Valemount Experience Guide is a publication of the Tourism Valemount Society. No part of this publication may be reproduced without consent from Tourism Valemount. The print guide along with the official destination website www.visitvalemount.ca provides guests with information for planning their year-round visits to Valemount, BC and area. To order more copies of the guide please contact us at marketing@visitvalemount.ca or call 250-566-3335.

Cover images by Frozen Pirate and Wildly_Ruby.



Photo credits: Boosted Imagery

4
Top Ten



6
Itineraries

10
Adventures



12
Mountains

16
Trails

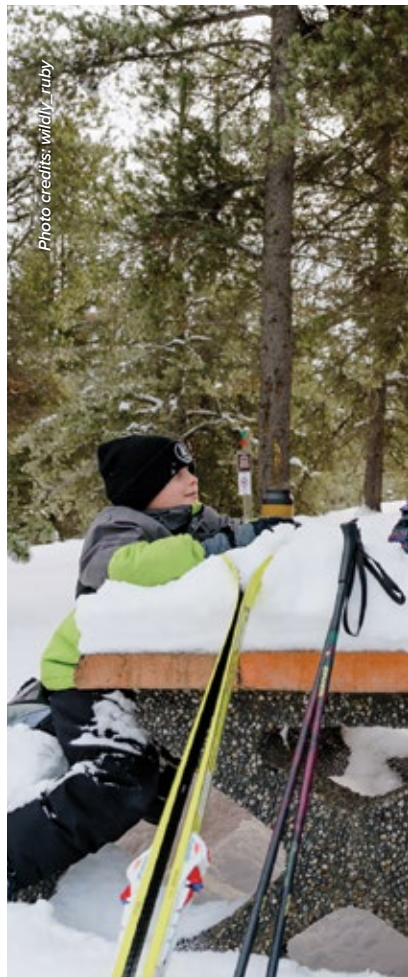
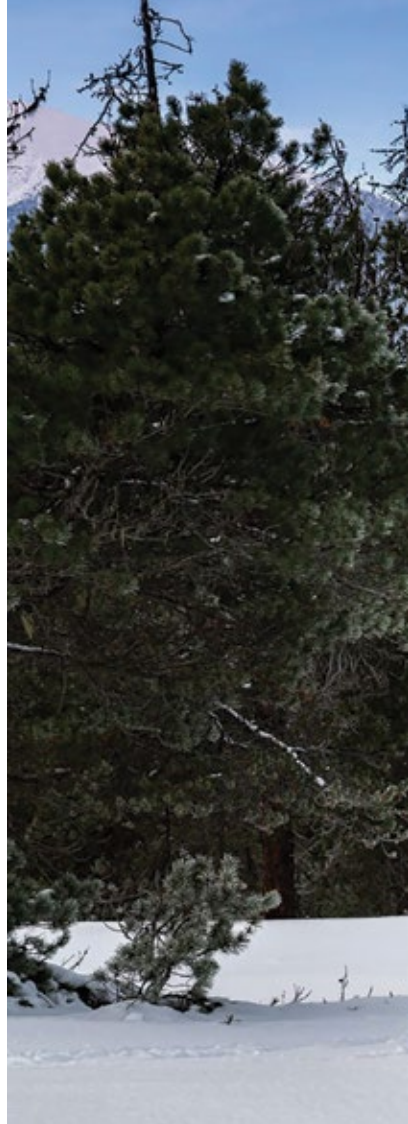


Top 10 Winter Activities

- 1 SLEDDING**– Experience the joy of snowmobiling in one of the most scenic Environments.
- 2 CAT-SKIING**– Enjoy backcountry snowboarding & skiing by the comfort of a Snowcat while accompanied by a knowledgeable guide.
- 3 DOG SLEDDING**– Enjoy the truly unique and Canadian experience of navigating trails by dogsled.
- 4 WINTER FEST**– Taking place in February, this family friendly event is jam packed with local vendors, artisans, face painting, skating, and games.
- 5 SNOWSHOEING/MICRO-SPIKE TO KINNEY LAKE**– Winter transforms Mount Robson into a quiet and serene destination to explore by foot.
- 6 CROSS COUNTRY SKIING**– Explore the local trails and see the trees and mountains dressed in their winter finery! Check out the Jackman Flats groomed trails, one trail for dogs on leashes. Discover the Camp Creek trails featuring a cabin, and dog friendly trails.
- 7 BACKCOUNTRY HUTS**– Book a backcountry hut for a chance to unplug and experience the untamed wilderness. Accessible by snowshoe, helicopter, and ski-touring.
- 8 SKI TOURING**– Surrounded by three different mountain ranges, it's no surprise that Valemount is prime ski-touring terrain.
- 9 SNOW CAPPED MOUNTAIN VIEWS**– Take a walk downtown or at any of the nearby trails to take in the mountain views.
- 10 WARM UP AT A LOUNGE/EATERY**– After all the fun of the day, unwind at a local food & beverage establishment.

For updates on events: www.visitvalemount.ca

– Content provided by Wildly_Ruby



TOP 10 ACTIVITIES



Photo credits: wildly_ruby



Photo credits: Leon Lorenz Canadian Wildlife Producers

FALL ITINERARIES





Photography by Melanie Boonstra

Fall

1-DAY

Day 1:

Every year, the Chinook salmon swim upstream over 1000kms back to the Robson Valley for the **salmon spawn**. Take a stroll down from the visitor centre to the viewing platform at Swift Creek, or drive out to Rearguard Falls to witness the rare act of salmon jumping up the Falls in order to reach their final destination, Overlander Falls. Approximately mid-August to mid-September.

3-DAY

Day 2:

Take in the amazing mountain scenery while practicing your swing at the **golf course**. Golf carts available, but with views this good, you may just want to walk the course.

Day 3:

Embrace your competitive side by entering the annual **Fishing Derby** at Kinbasket Lake on September long weekend. Fishers from all over take to the water to see who can claim the title of biggest catch.

5-DAY

Day 4:

Take a drive down Croyden Road past the historic ruins of old **Tete Jaune Cache**, the initial settlement of the area. Enjoy the stunning oranges and yellows of **Fall colours** lining the sides of the road.

Day 5:

If visiting during late August, participate in the annual **Mt. Terry Fox Trek**. Explore one of the most spectacular views around, while raising money for cancer. There are three different route options, from beginner to experienced.



Photo credits: Kelly Funk

Winter

1-DAY

Day 1:

Revel in the magic of **Mount Robson** covered in snow. Bring your snowshoes so you can experience the trail to Kinney Lake in a completely different way. 4.5 km later, you'll be rewarded with views of the stunning **Kinney Lake**.

3-DAY

Day 2:

Travel a winter wonderland by **Dog Sled**. Feel the icy breath of winter glance past as you stay cozy and bundled up in the dog sled. Take turns driving the dog sled for a once-and-a lifetime experience.

Day 3:

When someone mentions winter in Valemount, one of the first words that comes to mind is "**snowmobiling**" - and for good reason. Valemount is home to several unique and expansive riding areas. Rent a snowmobile or take a guided tour for a day that will be on replay in your memory bank. Just make sure you're up to date on your AST (or book a refresher from the local provider).

5-DAY

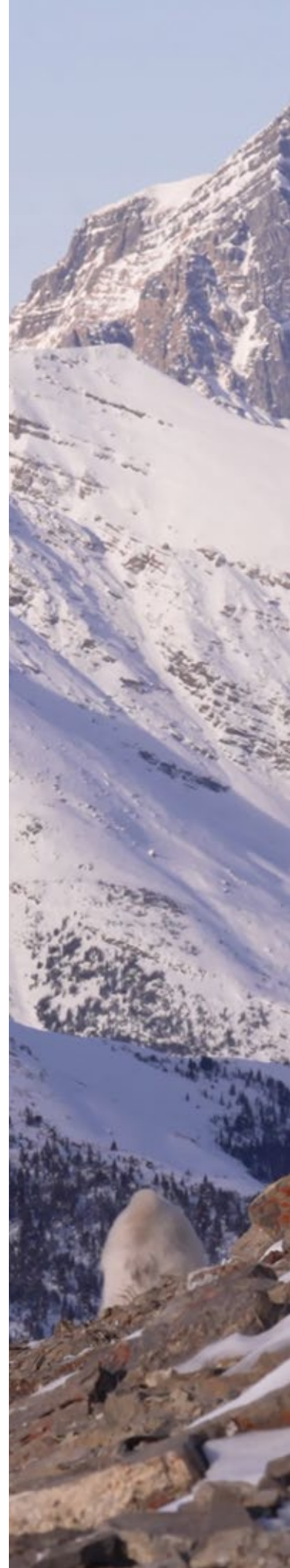
Day 4:

Book a night in one of the many **backcountry cabins**. With options to **ski-tour**, **snowshoe**, or **heli-in**, there's something for everyone. Alternatively, you can spend the day at Canada's only sled-assist backcountry ski hill: **Crystal Ridge**.

Day 5:

If **cross country skiing** is more your style, you're in luck! With two separate ski areas, Valemount is the perfect place to stretch those legs. Between Valemount & Tete Jaune sits **Jackman Flats**, and just South of Valemount is the **Camp Creek network**.

— *Itinerary content provided by wildy_ruby*



WINTER ITINERARIES



Valemount in winter is extraordinary with majestic mountain peaks, wildlife viewing and a variety of snow-covered adventures to choose from.

For those who want to sit and relax as they are toured in a warm cab or want to enjoy the exhilarating rush of skiing in fresh powder in the back country there is a guided tour for you! Accommodation options range from include luxurious lodges, hotels, motels, b &b's and back country cabins. Create your very own winter wonderland adventure, and make epic memories to cherish.

Cariboo Cat Skiing

250-566-9809 | cariboo catskiing.com

North of the Valemount and just over one hour drive west of Jasper, Alberta.

Cariboo Snowcat Skiing is a powder skiing and snowboarding operation in the beautiful snow covered Cariboo Mountains. Book your excursion and enjoy great skiing, snowboarding, and sightseeing.

Professionally Guided sightseeing tours are available for non-skiers. Experience going up into the Cariboo Mountains in a heated snowcat cab. Bring your camera to take photos of the panoramic views of Mount Robson and the surrounding peaks. Call ahead to have your tour planned to suit the ability of those in your group. Tours can be customized to be suitable for anyone from the first-time powder skier to the most experienced.

Dog Sledding

1-877-295-8505 | www.dogsleddinginjasper.com

Tours range from one hour to an overnight excursion.

For a truly Canadian experience featuring one of the oldest methods of winter travel book an excursion with Cold Fire Creek Dogsledding.

A team of 6-8 Alaskan Huskies will lead you into a snowy winter scape of frozen waterfalls, snow covered forest and panoramic views. The trail meanders alongside a freezing river and takes you up and down approximately 1,000 vertical feet of elevation along a 100-year-old trap line. Drive your own team of sled dogs or simply snuggle in the sled and soak up the incredible scenery.

Heli Sight Seeing and Heli-skiing

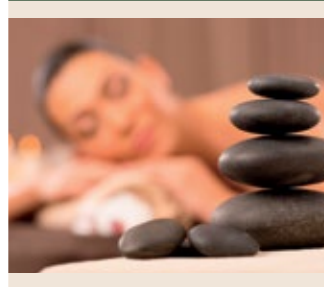
CMH Winter/Summer Adventures

1-800-661-0252 | www.cmhheli.com | www.cmhheli.com/destinations/valemount

Discover the Cariboo Range with a guided heli-skiing tour. With all the makings for an epic Valemount winter adventure including snowcapped big peaks, beautiful alpine and glacier views.



EMERALD EARTH
Organic Spa



- Massage
- Hot Stones
- Organic Facial
- Foot Bliss
- Spa Packages

Natural Skincare Products
Inspired by the Canadian
Wilderness, Handcrafted
in the Rocky Mountains.

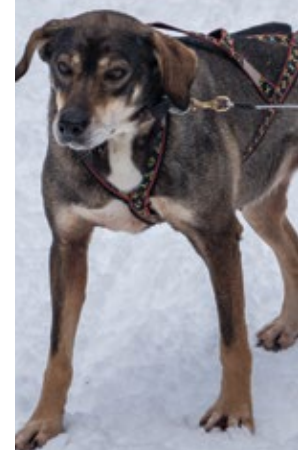
@emaldearthorganicspa



emaldearthorganicspa.com

Located within the Best Western Plus Hotel
Valemount BC | 250.566.1747

Photo credits: wifely_ruby





WINTER ADVENTURES

Photography by Melanie Boonstra



Yellowhead Helicopters – Robson Helimagic

1-877-454-4700 | www.robsonhelimagic.com

Take a sight seeing tour of the beautiful Canadian Rocky Mountains with Robson Helimagic. Located just minutes away from the iconic Mount Robson book an adventure with Robson Helimagic and choose from one of their year-round sightseeing tours including heli-snowshoeing in the winter.

Skating and Hockey

Canoe Valley Recreation Centre

250-566-4740 | 100 Elm Street

Indoor arena, public skating rink and fitness center. Open 7 days a week, 6:00am – 9:00pm; open statutory holidays (reduced hours). The center can be booked year-round for special events (birthday parties, exercise/dance programs and more). October through April hockey, figure skating and public skating. Hockey night in Valemount! Come and enjoy an entertaining game of ole time hockey. Bring your skates and go for a few laps around the rink during public skating. Take in a figure skating performance and cheer for the skaters who range in age and skills.

Snowshoeing or Hiking with Mini Spikes

Pick up a trail map at the Valemount Visitor Center and explore one of the trails in winter. Look for woodland creatures that are active in the winter months such as pine martens, squirrels, hares, deer and moose. There are some birds that do spend winter here and their chirps can be heard in the tree tops. Enjoy views of the mountains, frozen water falls, and snow-covered trees. Cranberry Marsh trail, Swift Creek Trail, Berg Lake Trail to Kinney Lake, and Little Lost Lake trails are a few that offer a great winter exploring experience. Know Before You Go and be prepared for sudden changes in weather!

For updates on the Berg Lake Trail be sure to check bcparks.ca/mount-robson-park
For more trail information go to www.trails.visitvalemount.ca

**If snowshoeing or hiking in the cross-country ski areas, please respect the groomed trails by refraining from using the set ski-tracks.*

EXPLORE OUR MOUNTAINS



Safety & Etiquette

Know Before you go and preplan your outdoor adventure! For great safety tips go to www.adventuresmart.ca and www.ridevalemount.com. For Avalanche Safety and awareness go to www.avalanche.ca. Have the gear, get the forecast, and get the training before you go.

- ✓ Plan your travel route
- ✓ Know the terrain and conditions
- ✓ Check the weather
- ✓ Always fill out a trip plan
- ✓ Obtain the knowledge and skills you need before heading out.
- ✓ Know and stay within your limits.
- ✓ Pack out what you pack in!

- ✓ Leave a trip itinerary with someone and report upon your return.
- ✓ Travel in pairs (the “buddy system”) and never venture out alone
- ✓ Always carry a form of communication (two-way radios, GPS locator device, satellite phone)
- ✓ Respect other user groups and help them when in need

Essentials for your winter adventures:

- ✓ Flashlight
- ✓ Fire making kit
- ✓ Signaling device (i.e. whistle)
- ✓ Extra food and water
- ✓ Extra clothing

- ✓ Navigational/communication devices
- ✓ First aid kit
- ✓ Emergency blanket/shelter
- ✓ Pocket knife
- ✓ Sun protection

Know and obey all riding area restrictions and boundaries. There are downloadable files on the Valemount Area Recreation Development Association (VARDA) website to help with this www.ridevalemount.com.

Support riding area you are visiting by purchasing a membership of the local club, VARDA.

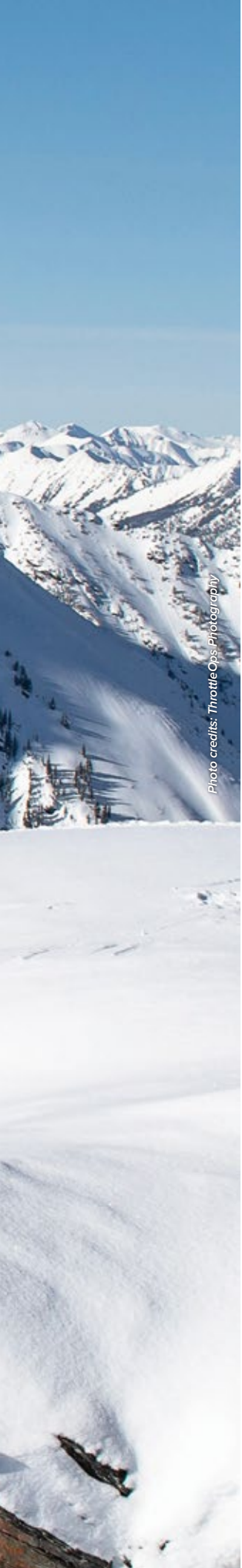


Photo credits: ThrottleOps Photography

Ride Valemount!

Let the Cariboo, Monashee, and Rocky Mountains inspire you to preplan and prebook your winter riding excursion in Valemount. This area is known for blue skies, fresh powder, wide open spaces, beautiful views, and challenging mountain terrain. Come experience world-class alpine snowmobiling. The sledding season typically begins in mid-November and ends in April. Prime conditions run from December through to March with the best mountain conditions and usually provides the freshest deep-powder snow for everyone to enjoy.

From the novice rider to the more experienced there are great riding options for all. The groomed trails and forest service roads (FSR) give novice riders the chance to experience spectacular scenery and alpine riding. There are also family trails that offer a little something for all levels of riders.

For first-time mountain riders, a guided tour is an option that will allow you to get to know the area safely.

For more information contact the **Valemount Area Recreation Development Association (VARDA)** at 250-566-4817 or visit www.ridevalemount.com. The website also provides downloadable GPS boundary files of the more popular riding areas safety information and backcountry closures zones.

For more information on snowmobile rentals contact **Alpine Country Rentals** at 250.566.9774 or visit www.alpinecountryrentals.com.

For professional and licensed Guide Services and Avalanche Skills Training courses **Frozen Pirate Snow Services** at 250-566-9950 or visit www.frozenpirate.com.

The four managed areas are Allan Creek, Chappell Creek, Clemina, and Keyhole.

Know Before You Go! A trail fee is required and can be purchased at the trailhead (cash only) or trail passes, and memberships can be purchased at www.ridevalemount.com. With all the riding areas please pack in and pack out, and practice leave no trace. Be sure to know where the Mountain Caribou closures are. Obey signs and get the digital boundary files for the riding area you will be going to at <https://www2.gov.bc.ca/gov/content/sports-culture/recreation/motor-vehicle-prohibitions/snowmobiling-in-bc/snowmobile-closures> or through www.ridevalemount.com. Please support the efforts of this incredible team who maintain the trails, provide riding opportunities, infrastructure development as well as education and safety training.



Photo credits: ThrottleOps Photography



Allan Creek

Base Elevation: 1,676 m (5,500 ft) **Top Elevation:** 2,286 m (7,500 ft)

Cabin GPS location: Lat. 52.576729 Lon. -119.160577

Cell service available at Mt Milton: Lat. 52.577228 Lon. -119.160908

AMENITIES: alpine shelter and out house

Allan Creek is one of the largest riding areas located near Valemount and is usually the first area to open each year. It is a favorite for riders due to the varying terrain. There is a gentle family riding area at the end of the groomed trail system as soon as you enter the alpine. The far-off terrain will certainly please every level of rider. At the end of the 9-km long groomed trail, you will find an alpine shelter.

The trailhead parking lot to Allan Creek is located 36 km south of Valemount on the west side of Highway 5. There is a 9-km long, regularly groomed trail with fast elevation gain to the alpine.

Allan Creek is a caribou sensitive area. Please follow area boundaries, encourage other riders to do the same and report any witnessed infractions to the drop box in the parking area. A GPS file of the area boundaries can be downloaded from www.ridevalemount.com.

Clemina Creek

Base Elevation: 1,676 m (5,500 ft) **Top Elevation:** 2,438 m (8,000 ft)

Cabin GPS Location: Lat. 52.530007 Lon. -118.924382

AMENITIES: Cabin, outhouse, groomed trail ***Family friendly***

Pack in and pack out, and please chop wood outside the cabin only

Clemina is a favourite for many riders with its spectacular scenery and diverse terrain, and has something for everyone. This area is highly recommended for the first-timer to riding in Valemount. A large parking lot is located 30 km south of Valemount on the east side of Highway 5. A beautiful 24-km groomed trail will take you to a subalpine warming shelter. After riding another kilometer down the groomed trail, you will reach the Goat Ridge Bowl alpine areas, which offer spectacular scenery. Riders of all skill levels can find suitable play areas.

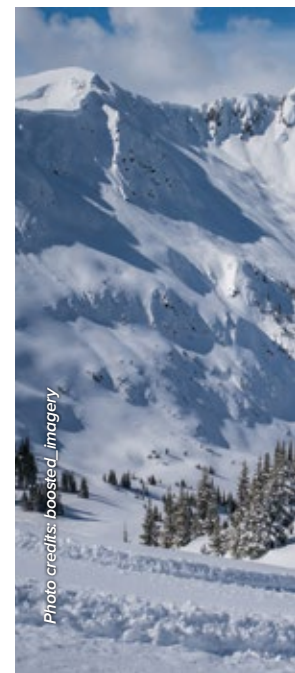


Photo credits: boosted_imagery



Photo credits: boosted_imagery



Photo credits: Throatleaps Photography



Chappell Creek

Base Elevation: 1,828 m (6,000 ft) **Top Elevation:** 2,438 m (8,000 ft)

Chappell Creek has some of the best snow levels in the valley. There is a large parking area and trailhead 58 km south of Valemount on the west side of Highway 5. Chappell's alpine area—with its gentle meadows and bowls—is a powder snow lover's dream. Chappell Creek is a great location to take newer riders as it is primarily made up of gentle low angle terrain that can be enjoyed by all skill levels. The groomed scenic access trail is 26 km long with a fast elevation gain in the last 3km.

Chappell Creek is a caribou sensitive area. Please follow area boundaries, encourage other riders to do the same, and report any witnessed infractions to the drop box in the parking area. A GPS file of the area boundaries can be downloaded from VARDA's website www.ridevalemount.com.

Keyhole

Base Elevation: 1,676 m (5,500 ft) **Top Elevation:** 2,438 m (8,000 ft)

Keyhole is accessed from the Clemina parking area 30 km south of Valemount on the east side of Highway 5. Please ask at the booth for directions from the parking area if you are unsure of where to go. There is a 9-km long groomed trail leading up to the alpine from the Clemina parking area. The trail in can be easily ridden by beginner riders, although the last kilometer is a single track trail through the trees that can be a bit tricky at times. There is no cabin or outhouse in the alpine area.

Upper Westridge & Lower Family Loop, and Crystal Ridge Sled Skiing

Cabin GPS Location: Lat. 52.825161 Lon. -119.347285

Check out the VARDA website to download a GPS file of the trail.

The Lower Family loop area is great for socked-in days or for a relaxed, casual and enjoyable ride or family outing. The area is accessed by turning right off of the highway at the first intersection just south of town (3.5 km); then follow the road until you reach an open parking area at the beginning of the Westridge Forest Service Road.

A main family loop will bring you back to the parking lot and will pass a little warming cabin, roughly half way through the loop. Follow the FSR (forest service road) for approximately 10 km until you see a directional sign that guides you off of the main FSR. Follow this road for another few km before it ends and puts you back onto the old snowmobile trail again. Once on the trail again, it will take you through the trees, passing the little warm-up shelter and back to the valley bottom. That is the main "Family Loop" with some great low-level terrain to play in on bad weather days. At times, this area can be closed due to logging activities so please check the website prior to planning any trips.

The area known as Upper Westridge holds some amazing alpine riding, but access is more for the intermediate rider. This area is accessed via the same staging area as the Family Loop. You follow the powerline over the CMH road and follow for 6 km, then you will turn right onto a steep single track trail. This will lead you to an alpine play area with a series of alpine bowls and spectacular scenery.

Crystal Ridge Sled Skiing. Access this one of a kindsled assisted skiing from the Westridge staging area. Featuring six fitness challenging runs that are roughly 2km long that will provide some amazing powder turns. For more information go to www.ridevalemount.com.

A very special thank you to the teams at **YORA (Yellowhead Outdoor Recreation Association)** and **VARDA (Valemount and Area Recreation Development Association)** who volunteer many hours to ensure the trails are maintained, groomed and ready for year-round use. **Please support these local groups by getting a trail pass, membership and/or making a donation!** Be sure to follow all posted signs and know the weather and safety conditions before you go. Practice leave no trace and always pack in and pack out.

Jackman Flats

➤ **LOCATION**– 10 km north of Valemount on Hwy 5

Consisting of four interlocking trails – Pine Tree, Lichen, Juniper and Big Dune these scenic trails are relatively flat. Enjoy the beautiful mountain views, see animal tracks in the snow and occasionally deer can be seen bounding along the trails. Interpretive signs provide interesting facts about this dynamic ecosystem. Trails signs guide the way as you explore the area. Follow the signs and stay on the groomed trails. The Jackman Flats Provincial Park offers a good variety of classic cross-country trails ranging from 1.4 to 6.2 km and a short stretch of skate track

*Know Before You Go: In winter Dogs are welcome on the dog friendly multi-use trail only. Please follow the signs. Dogs must be on leash. *Be aware of dead pine trees in the park that can create obstacles on the trail when they fall.*

Camp Creek

➤ **LOCATION**– Camp Creek is located 11 km south of Valemount on the east side off Highway 5 (look for the Camp Creek Road indicator on top of the stop sign).

AMENITIES– pit house, picnic shelter, warming cabin

Pack a lunch and head out for a fun day of skiing at Camp Creek. Trails offer a variety of options and cover approximately 10 kms. These are groomed trails, and the area is dog friendly.

5-Mile Hill

AMENITIES– There is an outhouse, fire pit, picnic table and parking at the staging area.

➤ **LOCATION**– Follow 5th avenue and turn right after the train tracks. Then take the first left and travel 1 km up the road is the main staging area. Follow the signs to the Valemount Bike Park staging area.

Bring your skis, snowboards, snowshoes or toboggans and try out the 5-Mile Hill. In the summer the 5-Mile Road is the access for the Bike Park and in the winter, it is access for winter fun. For those who have access to a snowmobile get a lift up or use your own power and skin ski, or snowshoe up the road. 5-Mile is groomed on a semi-regular basis.

**Follow all posted signs, and do not drive through road closure barriers.*

Advertisement for Peak Shuttles. The ad features a white van with the company logo and text: "PEAK SHUTTLES ELEVATING YOUR RIDE". To the right, it says "Passenger Transportation Services" and "250-566-3315". At the bottom, the website "www.peakshuttles.com" is listed. Social media icons for Facebook and Instagram are in the top right corner.

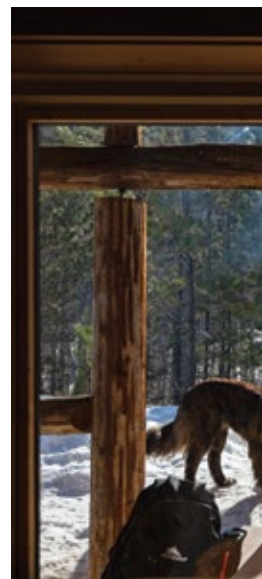




Photo credits: wildly_ruby

EXPLORE OUR TRAILS

Back-Country Cabins

Dave Henry Lodge & Swift Creek Cabins

250-566-4718 | www.davehenry.com

Connect with nature! Take a hike to a backcountry cabin, and enjoy beautiful views, meadows of wildflowers, and snow-covered alpine views in winter months. Headwaters Outfitting has two sites composed of three cabins cradled among subalpine meadows and lakes on the boundary of Mount Robson Provincial Park. You can hike or fly into either Dave Henry Lodge or Swift Creek Cabins.

The hike into Dave Henry Lodge is approximately 11 km from where a vehicle can be left. The lodge is a two-story log building which can accommodate up to 10 people. The sleeping area is upstairs in a large semi-divided room; one side with two double beds and the other with a long sleeping platform and another double bed.

The route to Swift Creek Cabins is about a 15 km hike from Dave Henry. It is a two-day hike to access them from trailhead. Swift Creek Cabins has two cabins – one for cooking and dining, and the other for sleeping. This will accommodate six people comfortably. There are wood heaters, propane lamps and cookstoves at both sites. All guests bring their own sleeping bags. Both facilities have a wood-heated sauna.

Hermit Thrush Back Country Cabin

250-566-4628 | www.HermitThrushcabin.com

This cabin is located in the subalpine. Hike along the trail 5.8 km to the cabin which sleeps up to four people. The essentials such as linens, propane stove/oven, plates/utensils, pots and pans, cooler and an outhouse with toilet paper are provided.

In summer, a meadow of wildflowers lies just below the cabin while a small lake is minutes away. A hiking trail crosses an old rock slide, leading to alpine meadows and ridges. In winter, the cabin provides access to alpine skiing, snowboarding, or snowshoeing. Pristine air and magnificent vistas to refresh the mind and soothe the soul are available in any season